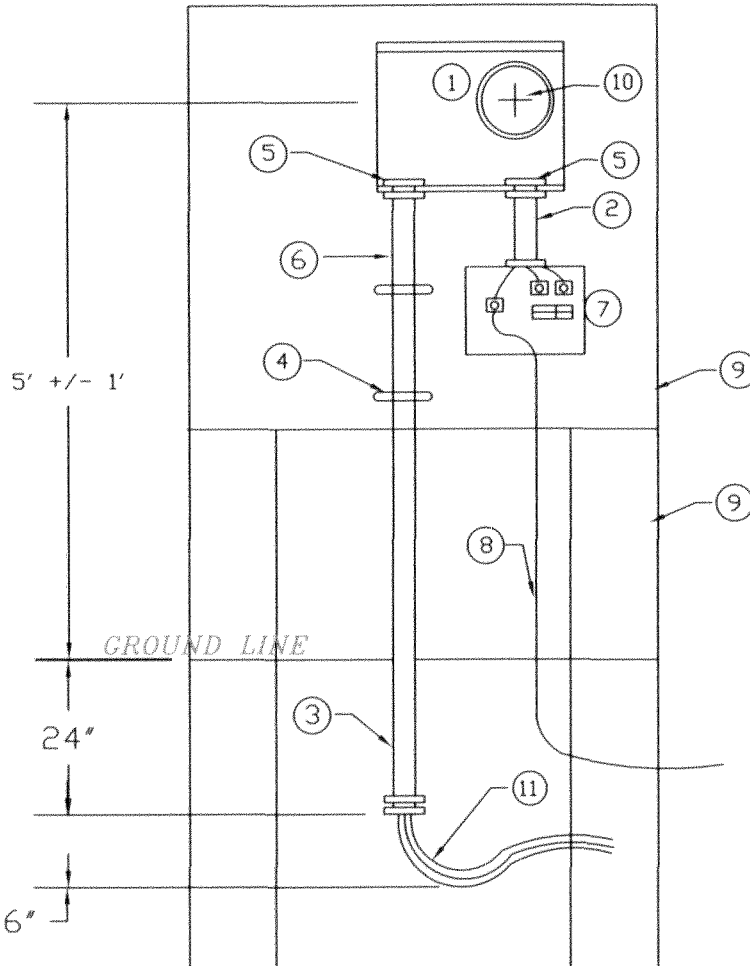


UNDERGROUND SERVICE ENTRANCE ON TREATED POST/FIXTURE



METER BASE DETAIL

THIS DRAWING IS TO BE USED AS A GUIDE ONLY. PIE&G SHALL NOT BE RESPONSIBLE FOR DAMAGES FROM USE OR MISUSE OF THIS SPECIFICATION.

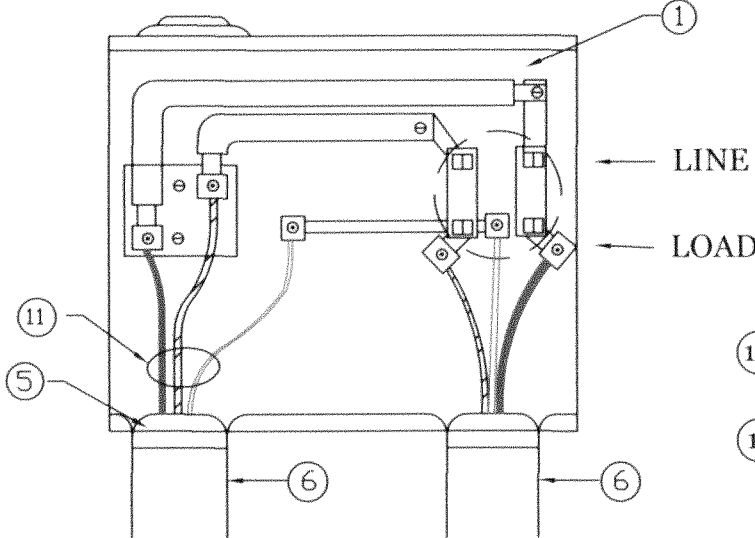
NOTE: ALL MEMBERS' SERVICE EQUIPMENT IS PER THE NATIONAL ELECTRIC CODE (NEC) AND MUST BE APPROVED BY THE LOCAL ELECTRICAL INSPECTOR. PIE&G CAN NOT ENERGIZE THE SERVICE WITHOUT THIS APPROVAL

MEMBER'S SERVICE EQUIPMENT

- ① METER BASE - (200 AMP MINIMUM) (SEE DETAIL BELOW)
- ② MEMBER'S SERVICE ENTRANCE CABLE OR CONDUCTORS IN CONDUIT
- ③ ELECTRICAL CONDUIT (2" MINIMUM) TO BE EXTENDED 2' BELOW GRADE. PVC OR RIGID STEEL CONDUIT.
- ④ CABLE STRAPS OR CONDUIT CLAMPS AS REQUIRED
- ⑤ CONNECTORS AS REQUIRED
- ⑥ PVC OR RIGID STEEL CONDUIT AS REQUIRED
- ⑦ MEMBER'S RAINTIGHT DISTRIBUTION PANEL & SERVICE ENTRANCE EQUIPMENT AS REQUIRED
- ⑧ GROUNDING PER NEC - COUNTY MAY REQUIRE 2 GROUND RODS
- ⑨ ALL LUMBER MUST BE TREATED

PIE&G SERVICE EQUIPMENT

- ⑩ PIE&G KWH METER - min. 4', max. 6' from ground
- ⑪ PIE&G UNDERGROUND SERVICE CONDUCTORS



ACAD FILE
SPEC\TEMPSPEC

DATE	DESCRIPTION
5/93	UNDERGROUND SERVICE ENTRANCE ON PEDESTAL (TEMPORARY/PERMANENT)
	REVISED 06/18/14 AB

PIE&G
 19831 M-68 HWY.
 P.O. BOX. 308
 ONAWAY, MI 49765-0308
 (989) 733-8515 (800) 423-6634